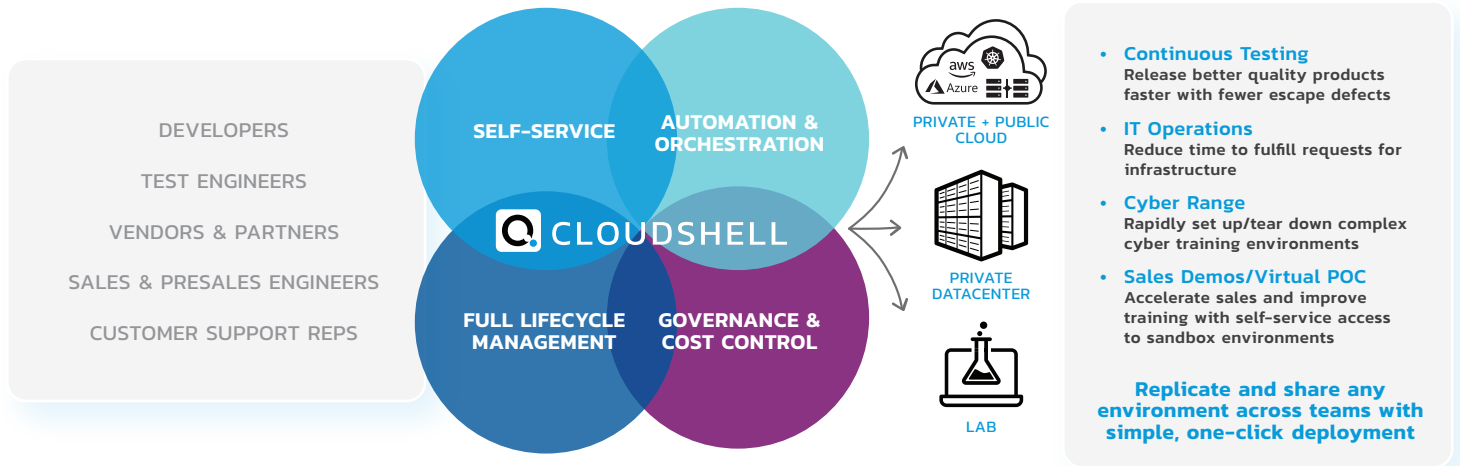


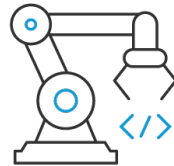
CloudShell is the leading platform for delivering Infrastructure Automation at Scale for complex on-premise, hybrid, and cloud environments. IT leaders and innovators around the world trust Quali to enable self-service environment provisioning and automated decommissioning to streamline the development, testing, and certification of various technologies into production environments.



**IMPROVE PRODUCTIVITY**

**Environments On-Demand**

Provide your teams with on-demand, self-service access to the standardized environments they need.



**AUTOMATE & ORCHESTRATE**

**Speed Time to Market**

Automate the set up of time-bound or persistent sandboxes. If time-bound, CloudShell will automatically tear down the environment freeing up resources for future use.



**GOVERNANCE**

**Gain Full Visibility**

Increase visibility and control into data and analytics and view them in an out-of-the-box dashboard.

**DEPLOY ELASTIC SANDBOX ENVIRONMENTS IN MINUTES**

Deliver full-stack infrastructure environments in a way that's repeatable, reliable, and scalable

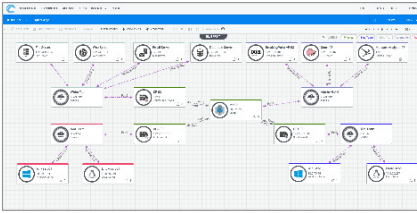


**Slash** your Dev/Test and lab infrastructure cost by **61%**

**Accelerate** your enterprise sales cycles by **22%**

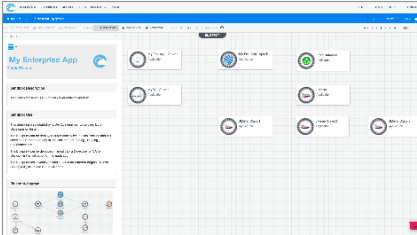
**Spin up** training and test environments in under **1 minute**

## FEATURES



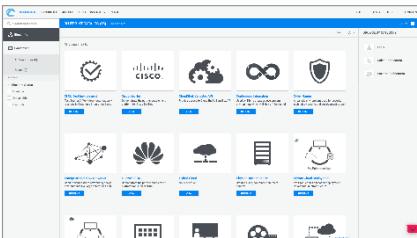
### Self-Service Environments

Model complex infrastructure and application environments. Users drag and drop modules to combine physical and virtual infrastructure, network connectivity, applications, and cloud instances.



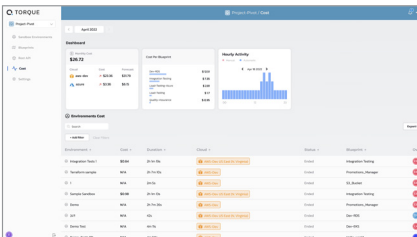
### Simple Blueprint Modeling

Use out-of-the-box automated set-up and tear-down capabilities as well as extensible Python libraries to create powerful orchestration workflows and save & restore environment resources with ease.



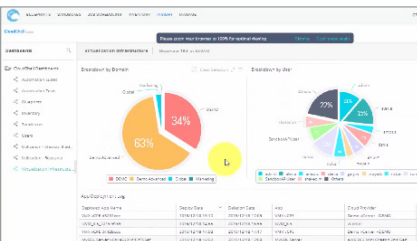
### Seamless Orchestration

Publish environment blueprints to a shared self-service catalog and provide your teams with on-demand, self-service access to the standardized infrastructure environments they need.



### Frictionless Governance

Take control with fine-grained, role-based access, and policy enforcement and support thousands of users with SSO and smart multi-tenancy while controlling costs and security.



### Insight Analytics

Gain better insights and optimize your investments by capturing and analyzing user, resource, and reservation statistics all from a single, out-of-the-box Insights Dashboard.

The ability to spin-up sandboxes for Hybrid cloud deployments with standardized environments and end-to-end visibility can allow development and test teams to **make the best use of on premise and public cloud resources, simplify workflows and rollout releases faster with higher quality**

CloudShell Platform: Trusted by the Global 500 and Innovators Everywhere

